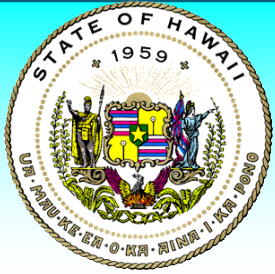


PATA Hawaii

2016 Hawaii's Airport System Update

August 18, 2016



Department of Transportation AIRPORTS DIVISION

The Hawaii Airports System Is Self-Supporting

- The State of Hawaii's General Fund (tax revenues) does not fund the operation of the Airports System.
- Rather, the Airports System generates its own revenues and pays for its own expenses from concession and airline revenue.
- The Airports System is a Special/Enterprise Fund similar to a private sector entity.

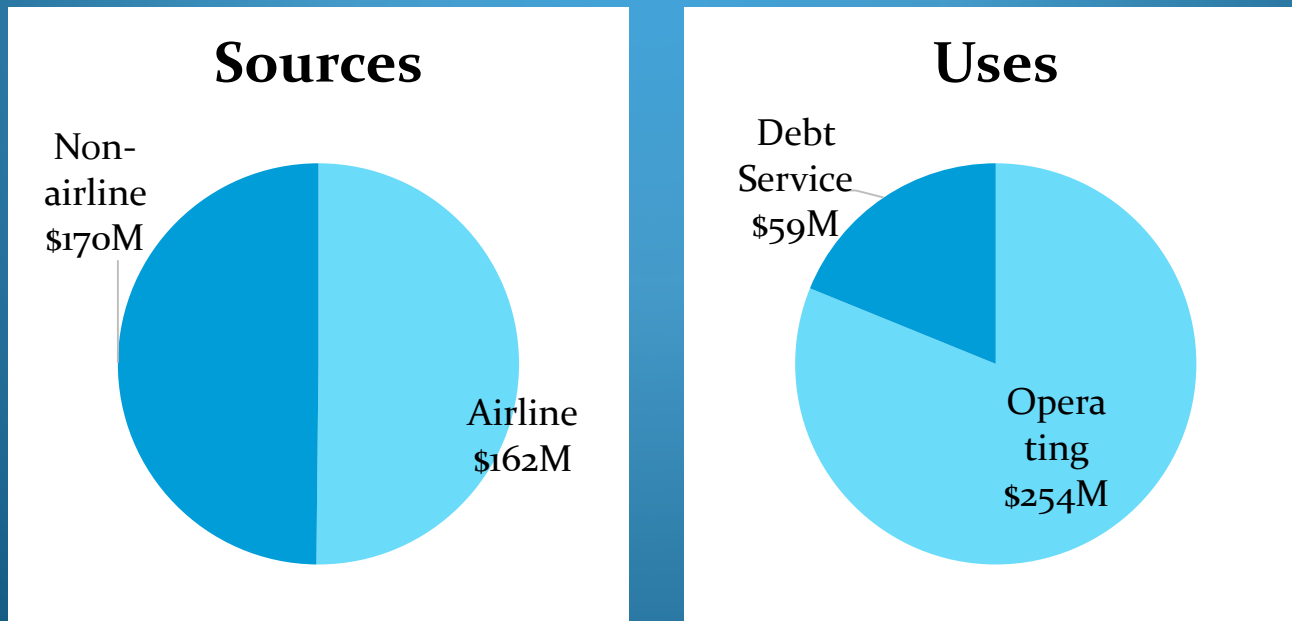
Primary Sources of Funds	Primary Uses of Funds
<ul style="list-style-type: none">• Airline revenues: landing fees, terminal rentals, etc.• Nonairline revenues: passenger concession fees, parking revenues, etc.• Federal grants and Passenger Facility Charge revenues	<ul style="list-style-type: none">• Operating expenses (personnel, contractual services, utilities, etc.)• Debt service payments• Capital expenditures (facilities, equipment, etc.)

AIRPORTS DIVISION

DOTA Sources and Use of Funds

- Approximately half of all revenues from airline payments, with the other half from concession revenues and other nonairline revenues.
- Approximately 75-80% of expenditures on operating expenses, and 20-25% on debt service.

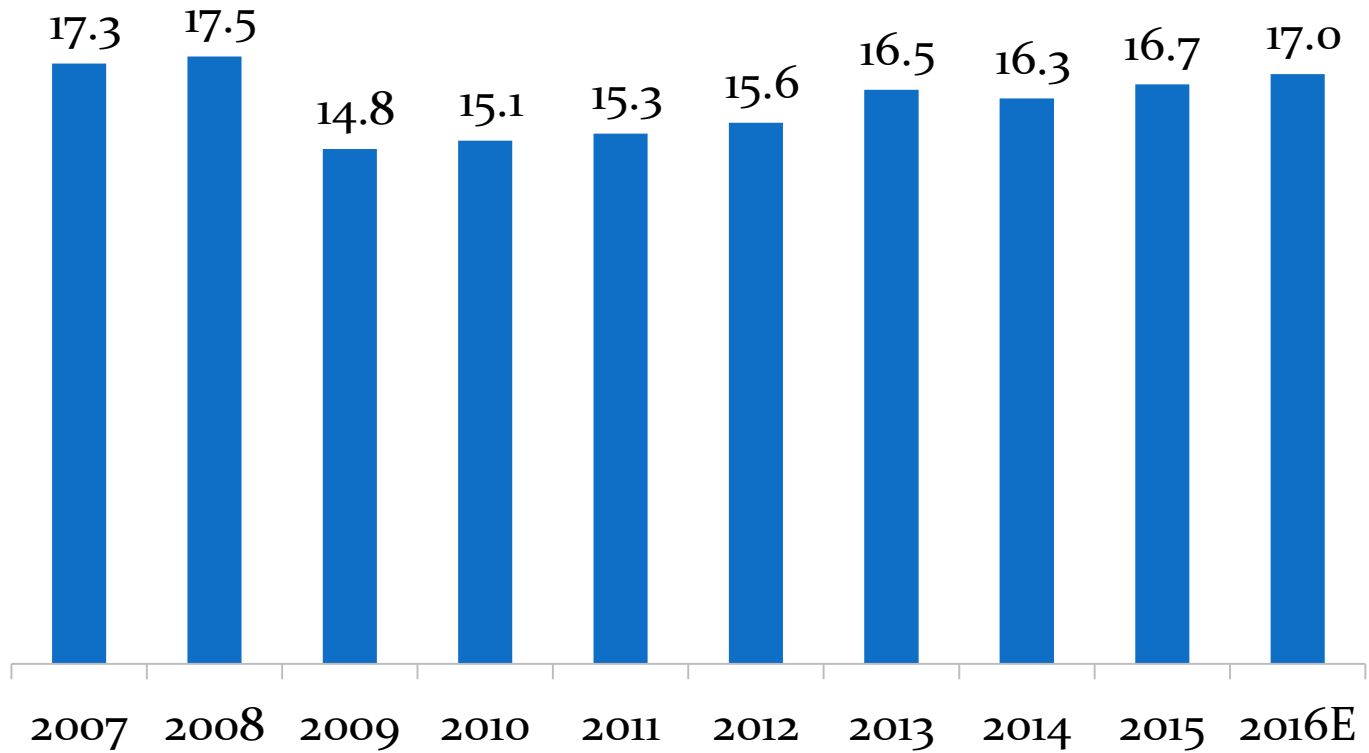
FY 2015 Financial Results (in millions)



Note: FY 2015 debt service excludes \$18.5 million of airline prepaid interest.

AIRPORTS DIVISION

Enplaned Passengers (Fiscal years; in millions)



Source: Hawaii Airports System.



Mauka Concourse Honolulu International Airport

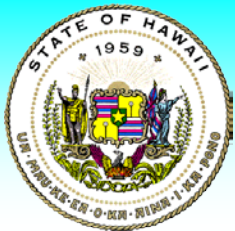
Before



Public Benefit: Increases gate capacity adding a combination of 6 wide body or 11 narrow body aircrafts.

Construction:

- Start: Apr 2017
- End (Est): Aug 2019
- Cost: \$245M



Mauka Concourse Honolulu International Airport

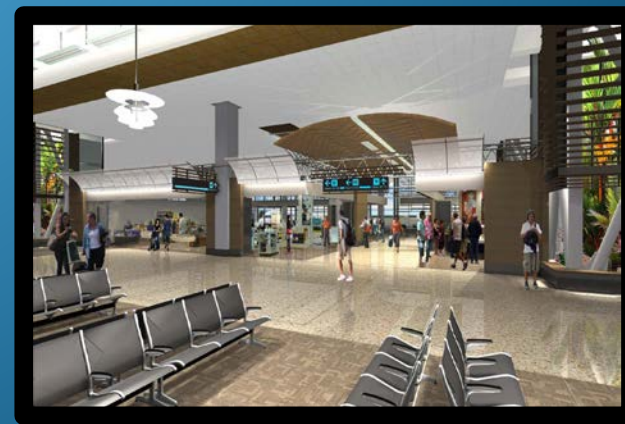
After



Public Benefit: Increases gate capacity adding a combination of 6 wide body or 11 narrow body aircrafts.

Construction:

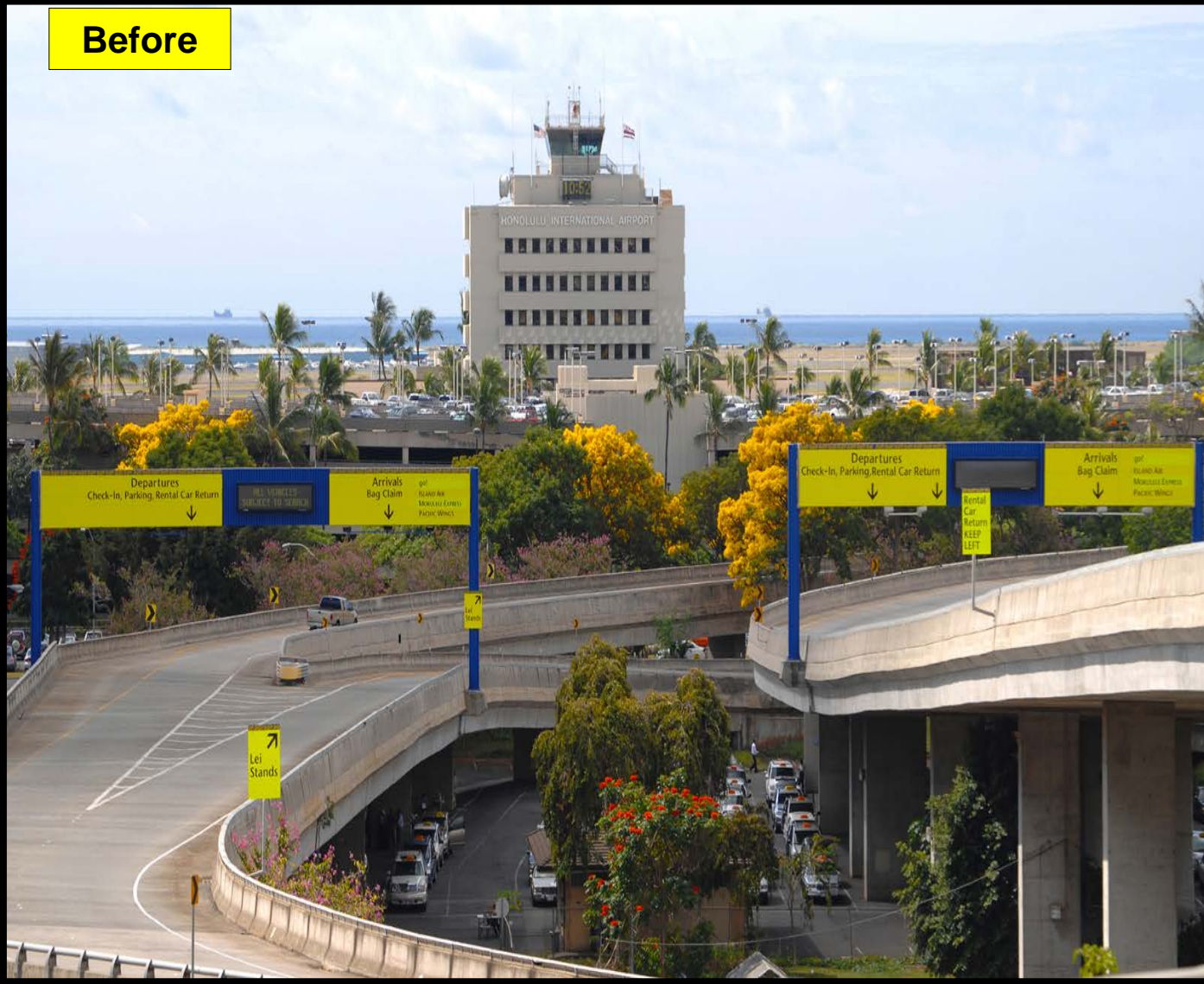
- Start: Apr 2017
- End (Est): Aug 2019
- Cost: \$245M





HNL Roadway/Terminal/Garage Signage Improvements Honolulu International Airport

Before



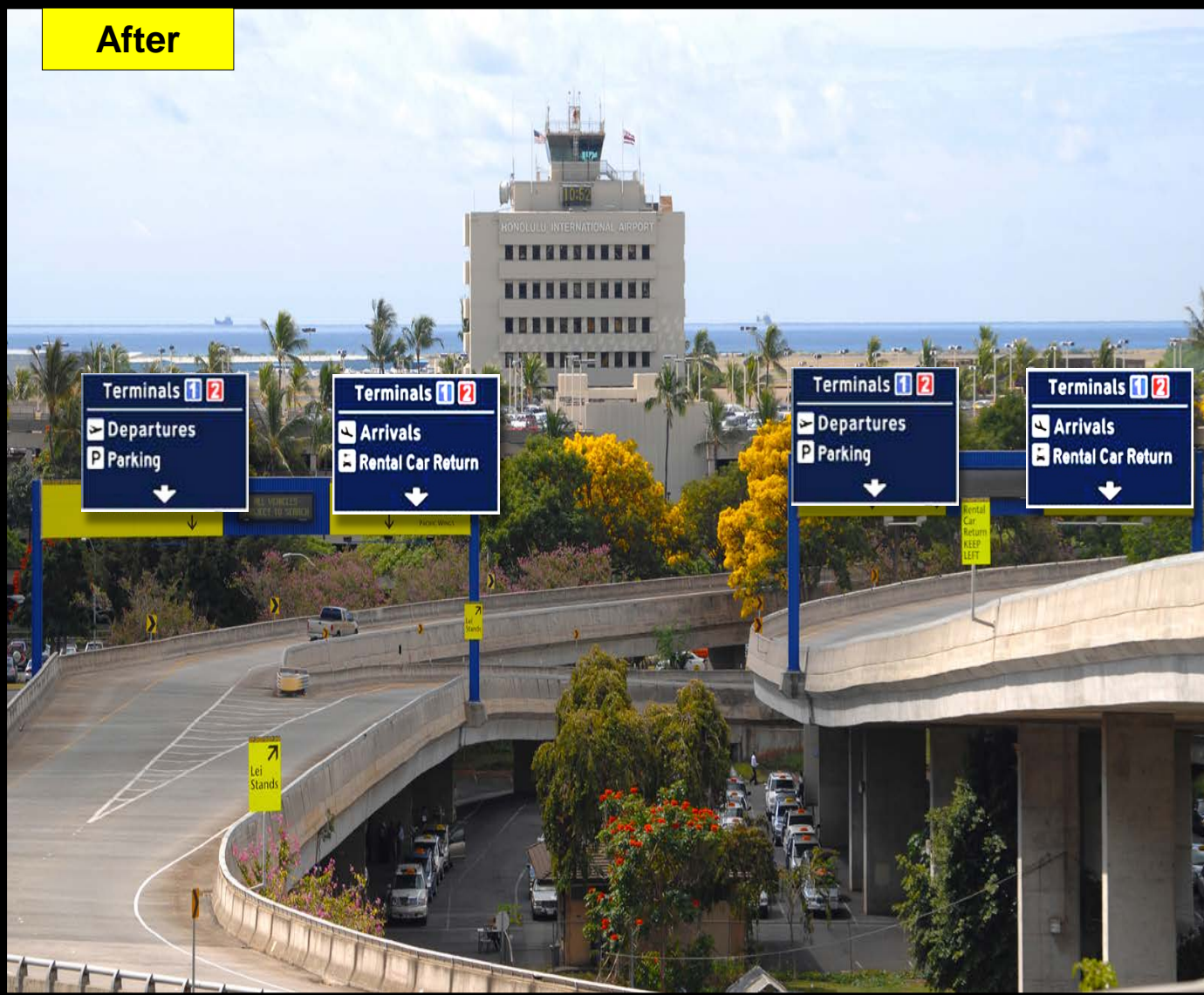
Public Benefit:
Coordinates all directional and way finding signage and improved visibility for entry and exit from airport. Includes retrofitting steel support structures to code.

Start: Sept 2016
End: Dec 2017
Cost: \$25M



HNL Roadway/Terminal/Garage Signage Improvements Honolulu International Airport

After



Public Benefit:
Coordinates all directional and way finding signage and improved visibility for entry and exit from airport. Includes retrofitting steel support structures to code.

Start: Sept 2016
End: Dec 2017
Cost: \$25M



Terminal Signage Improvements Honolulu International Airport

Existing Terminal Signage



Proposed Terminal Signage



Public Benefit:
Coordinates
direction signage
and improved
visibility for entry
and exit from airport.

Start: Sept 2016
End (est.): Dec 2017

Cost (est.): \$11M

Roadway Signs: \$14M
- Replace approx. 60 Signs
- Includes replacing or
repairing 29 overhead signs
Terminal Signs: \$11M
- Replace approx. 3,000 signs





Flight Information Display (FIDS) Replacement Honolulu International Airport



Public Benefit:
Large, easy to read,
state of the art
Flight Information
Display boards for
Lobbies 2 and 3.

Start: May 2014
End: Comp Nov 2015
Cost: \$1M



Restroom Improvements Honolulu International Airport

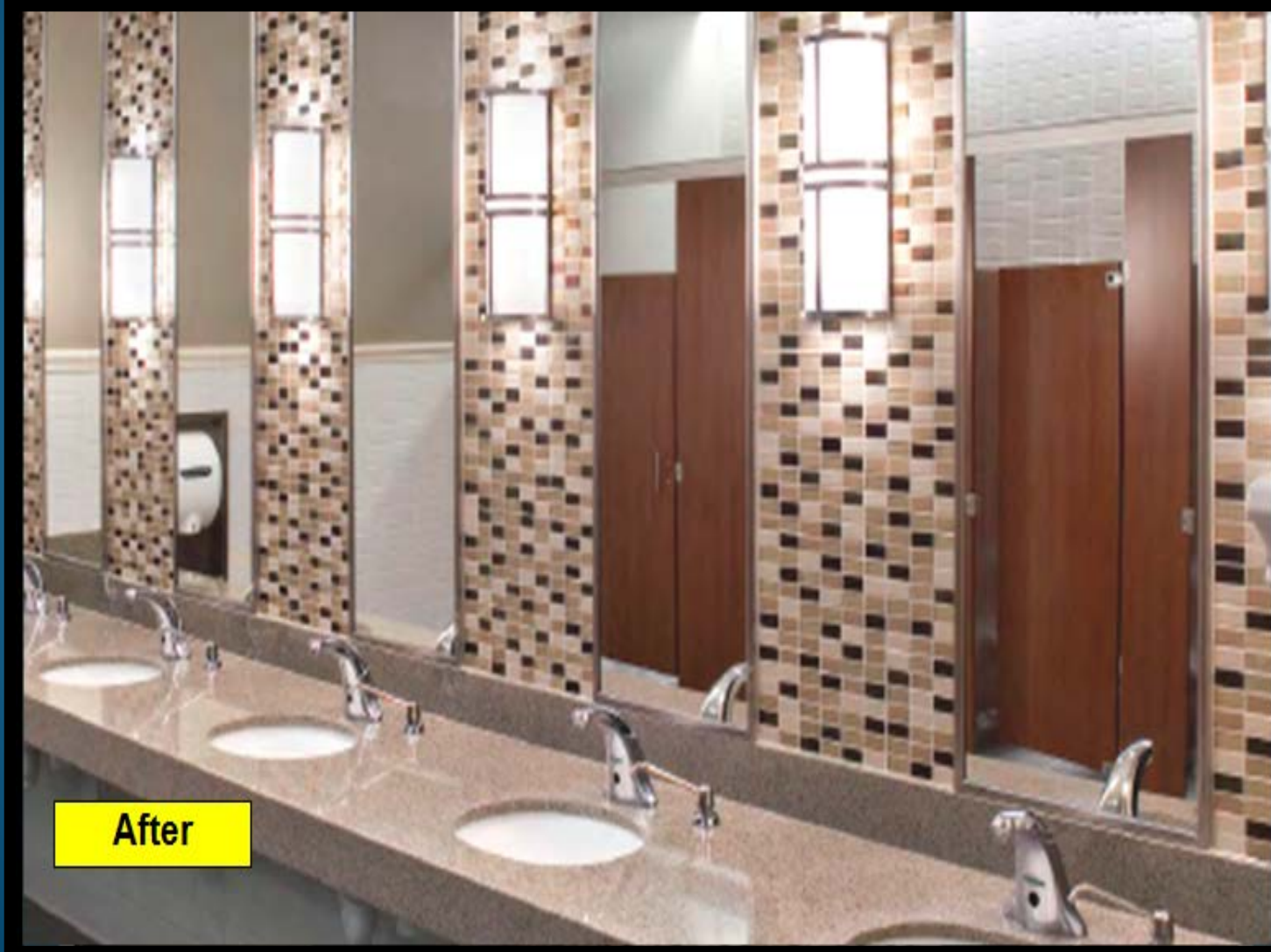


Public Benefit:
Renovates 20+
year old restrooms
to a contemporary
look, including
improved
ventilation. Up to
35 restrooms.

Start: July 2017
End (est): Dec 2018
Cost: \$15M



Restroom Improvements Honolulu International Airport



Public Benefit:
Renovates 20+
year old restrooms
to a contemporary
look, including
improved
ventilation. Up to
35 restrooms.

Start: July 2017
End (est): Dec 2018
Cost: \$15M



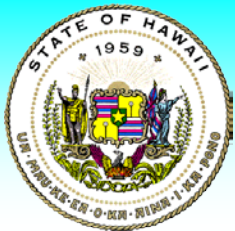
Overseas Terminal (OST) Metal Roof Replacement Honolulu International Airport

On-going



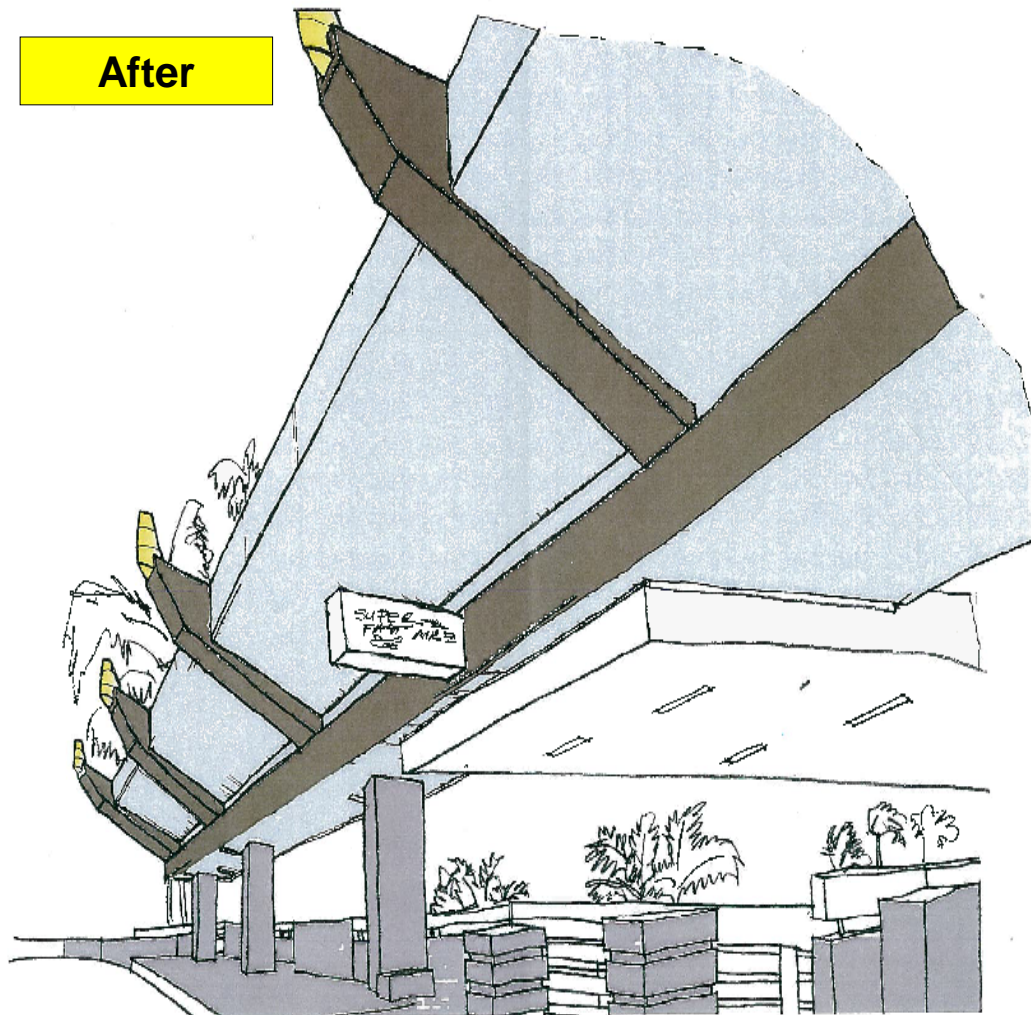
Public Benefit:
Replaces
corroded-leaking
roofs. Increases
height clearances
for tour buses to
park nearer to
curb, protecting
passengers during
inclement weather.

Start: Jan 2015
End: Aug 2017
Cost: \$15M



Overseas Terminal (OST) Metal Roof Replacement Honolulu International Airport

After



PROPOSED CANOPY PERSPECTIVE RENDERING

SCALE: N/A

Public Benefit:
Replaces corroded-leaking roofs. Increases height clearances for tour buses to park nearer to curb, protecting passengers during inclement weather.

Start: Jan 2015
End (est): Aug 2017
Cost: \$15M



Overseas Terminal Pedestrian Bridges Replacement Honolulu International Airport

Before



Public Benefit:
Replaces 3 highly utilized deteriorated walkways from the OST parking structure to the terminal.

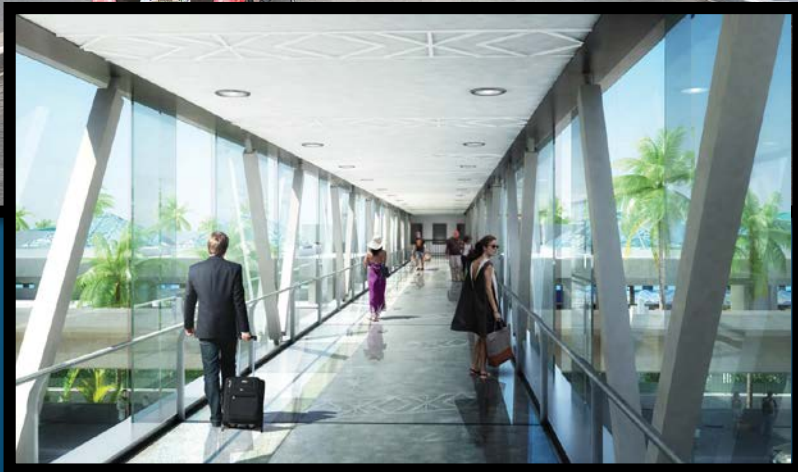
Start: Oct 2016
End (est): Dec 2017
Cost: \$17M





Overseas Terminal Pedestrian Bridges Replacement Honolulu International Airport

After



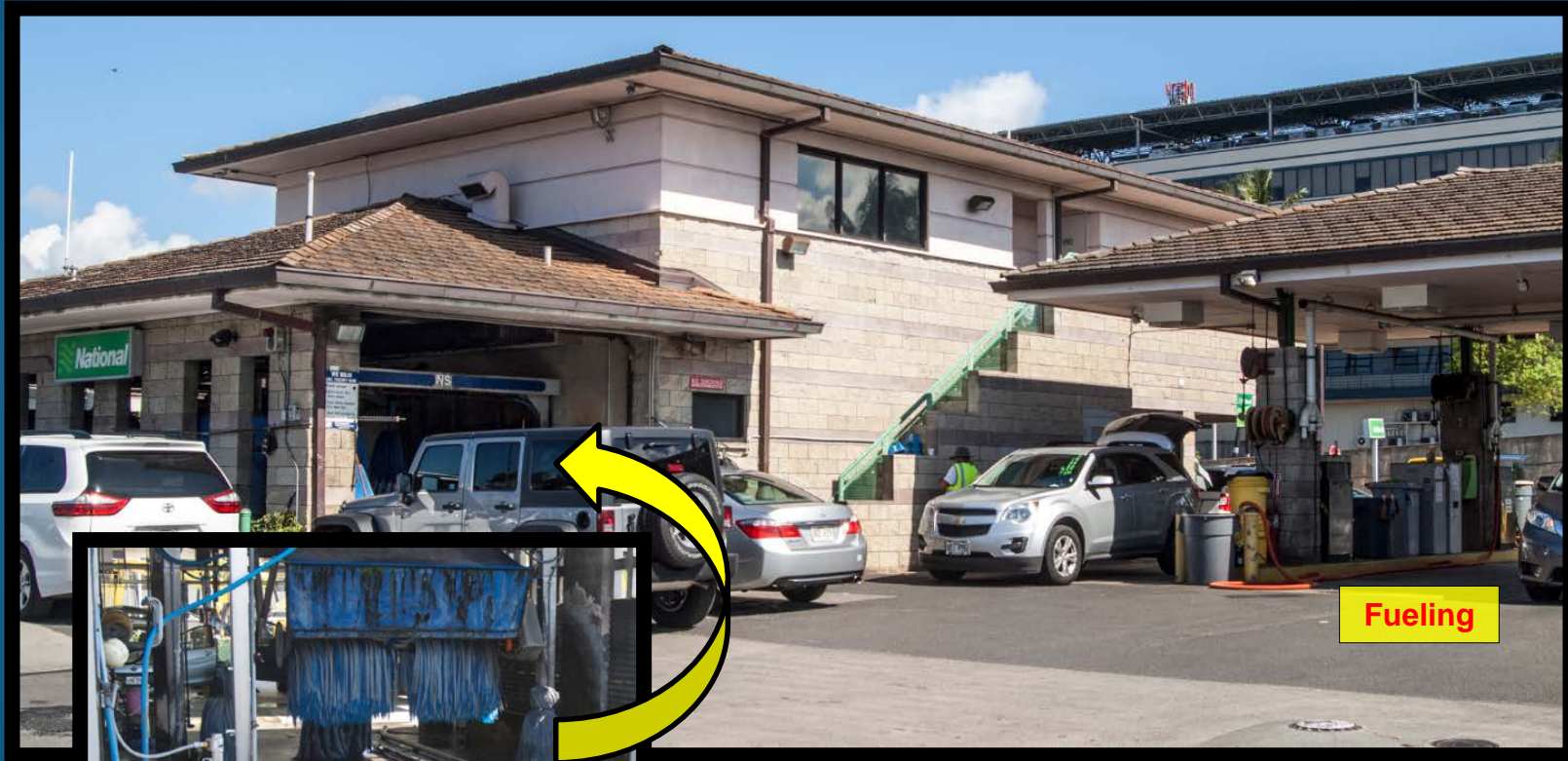
Public Benefit:
Replaces 3 highly utilized deteriorated walkways from the OST parking structure to the terminal.

Start: Oct 2016
End (est.): Dec 2017
Cost: \$17M



Old Consolidated Rental Car Facility Honolulu International Airport

Before



Fueling



Carwash



Interim Rental Car Customer Service Facility Honolulu International Airport



Public Benefit:
Consolidates most the rental car companies into one facility including common shuttle buses.

Start: Feb 2014
Compltd: Nov 2015
Cost: \$31M

Funding Source: CFC



Permanent Consolidated Rental Car Facility Honolulu International Airport

Before



Public Benefit:
Consolidates most of the rental car companies into one facility, including common shuttle buses, carwash, fueling, quick turn-around.

Construction:
Start: Aug 2016
End (est): Jul 2020
Cost: \$330M



Permanent Consolidated Rental Car Facility Honolulu International Airport

After



Public Benefit:
Consolidates most of the rental car companies into one facility, including common shuttle buses, carwash, fueling, quick turn-around.

Construction:
Start: Aug 2016
End (est): Jul 2020
Cost: \$330M



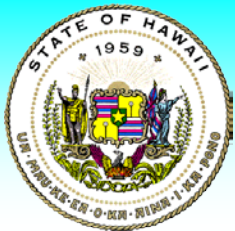
Automated Passport Control Kiosks Honolulu International Airport



Public Benefit:
Installation of 32 automated passport control kiosks decreases current processing times by 30% for over 6,000 international passengers arriving daily.

Start: Sep 2015
Completed: Mar 2016
Cost: \$1.7M





Automated Passport Control Kiosks Honolulu International Airport



**Public
Benefit:**
Installation of
32 automated
passport
control kiosks
decreases
current
processing
times by 30%
for over 6,000
international
passengers
arriving daily.

**Start: Sep 2015
End: Comp Mar 2016
Cost: \$1.7M**



Energy Performance Contract Statewide Airports

HNL ROOFTOP PARKING IN PROGRESS

RETROFIT COMPLETE

BEFORE RETROFIT



Public Benefit:
Reduces energy usage by statewide airports resulting in a 49% guaranteed savings through improvements and upgrades:

- 75,000 Light fixtures
- Decrease 600 different types of bulbs to 90
- “Smart Variable Control” A/C
- 375 Transformers
- 9,000 Photovoltaic panels

Start: Jan 2014

End: Comp Jan 2016

Cost: \$150M



Neighbor Island Airports

Neighbor Island Airports



Restroom Renovation, Phase II Kahului Airport

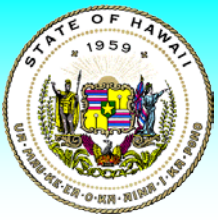
Before



Public Benefit:
More aesthetically pleasing, Hawaiian sense of place, updated, clean, and air conditioned space for a world class experience.

**7 completed;
4 in progress**

**Start: Feb 2015
Completed: Jan 2016
Cost: \$4.5M**



Restroom Renovation, Phase II Kahului Airport

After



Public Benefit:
More
aesthetically
pleasing,
Hawaiian sense
of place, updated,
clean, and air
conditioned
space for a world
class experience.

Start: Feb 2015
End: Jan 2016
Cost: \$4.5M



Consolidated Rent-A-Car (ConRAC) Facility Kahului Airport

Before



Public Benefit: Improve the efficiency and ease in rental car services with a consolidated rental car facility, including a quick turnaround, ready return, customer service building and tram system to the airport.

Start: Fall - 2015
End (est): Fall - 2018
Cost: \$350M



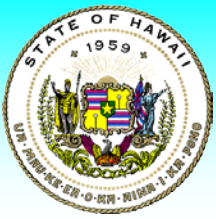
Consolidated Rent-A-Car (ConRAC) Facility Kahului Airport

After



Public Benefit: Improve the efficiency and ease in rental car services with a consolidated rental car facility, including a quick turnaround, ready return, customer service building and tram system to the airport.

Start: Fall - 2015
End (est): Fall - 2018
Cost: \$350M



Airport Access Road Kahului Airport



Public Benefit:
Significantly
improves traffic
flow and access
to the airport and
will relieve traffic
congestion.

Start: Oct 2014
Completed: Jul 2016
Road opened: Jul 23
Cost: \$57M



Airport Access Road Kahului Airport





Runway 2-20 Reconstruction and Extension Kahului Airport

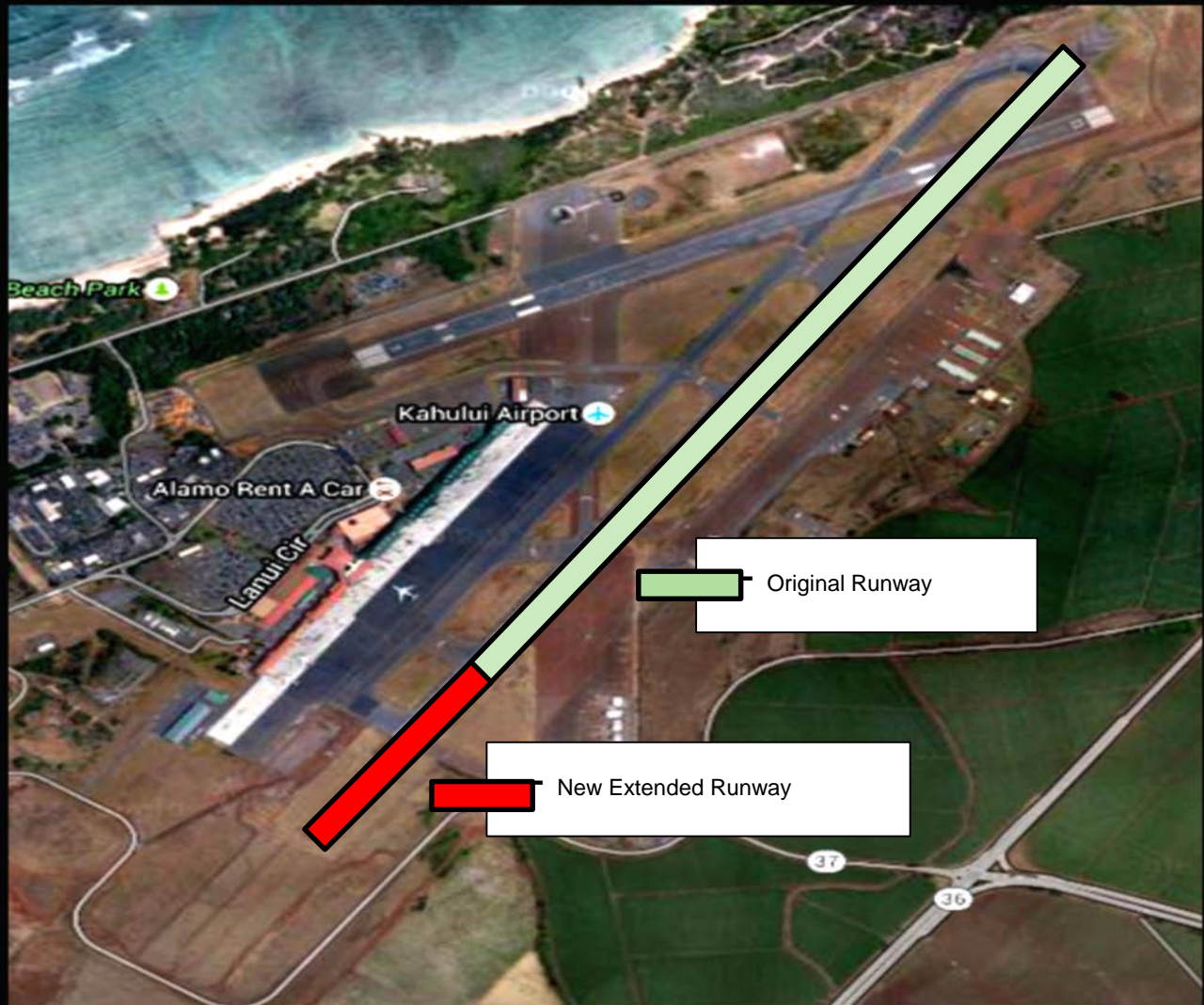


Public Benefit:
Reconstruct 50+ year
old runway due to wear
and tear. Extension to
comply with FAA
runway safety area
standards.

Start (est.): 2019
End (est.): 2021
Cost: \$210M



Runway 2-20 Reconstruction and Extension Kahului Airport



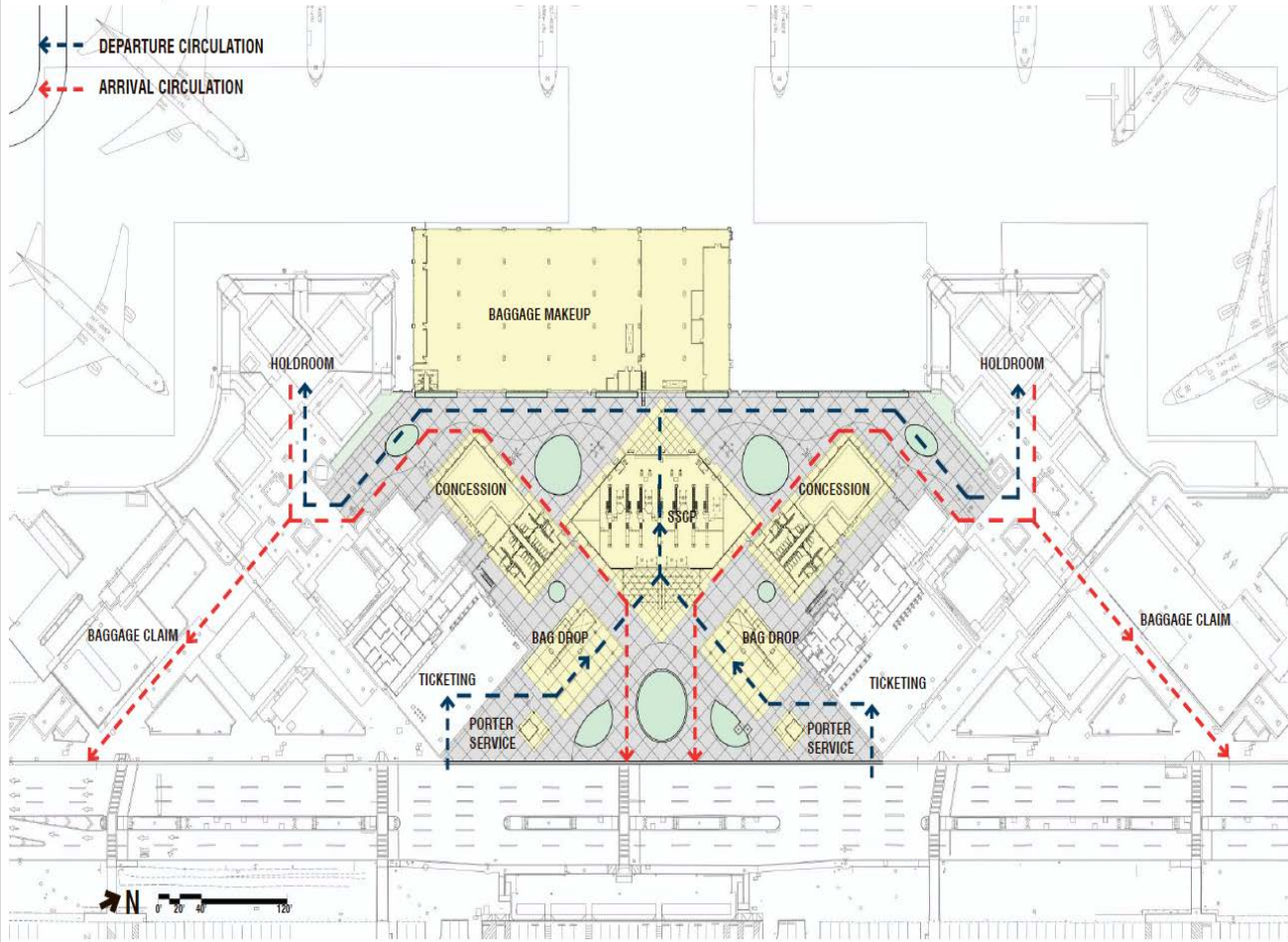
Public Benefit:
Reconstruct 50+ year old runway due to wear and tear. Extension to comply with FAA runway safety area standards.

Start (est.): 2019
End (est.): 2021
Cost: \$210M



Terminal Modernization Program Kona International Airport

KOA TMP PHASE 1 | CIRCULATION



Public Benefit:
Project will provide centralized check-point by integrating with existing terminal, improved passenger circulation flow within terminal, additional retail concession space and restrooms.

Start (est.): Sep 2016
End (est.): Dec 2018
Cost: \$75M



Existing International Arrivals Building (IAB) Kona International Airport

Before

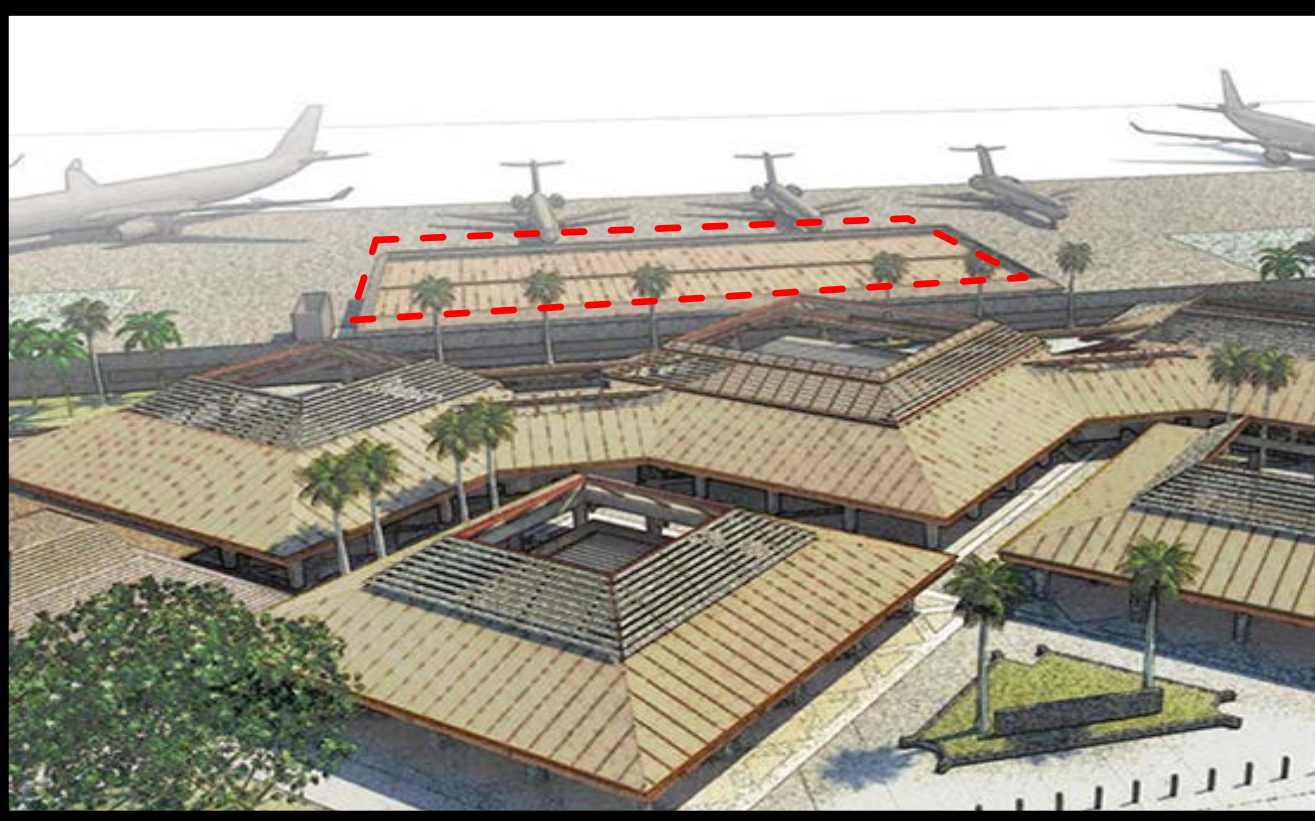


Currently working on upgrading current facility to meet U.S. CBP standards in order to re-open the existing FIS this November to accommodate HA Tokyo flight



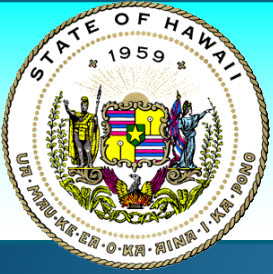
International Arrivals Building (IAB) Kona International Airport

After



Public Benefit: New permanent IAB structure integrated into existing terminal to relieve HNL congestion; provides a second port of entry to Hawaii.

Start (est.): Jan 2017
End (est.): June 2018
Cost (est.): \$50M



Restroom Improvements

Hilo International Airport



DESCRIPTION

Renovation of all ground floor public restrooms (4 pairs), which includes enlargement of the ladies restrooms.

CONSTRUCTION COST

\$6M

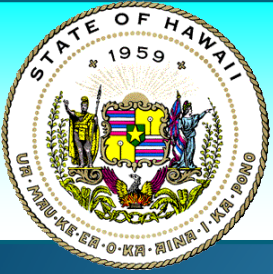
SCHEDULE

Design Start Date:

Nov 2016

Construction Start:

Nov 2017



ARFF Facility Improvements Hilo International Airport



SCOPE:

2-Story, 21,000 sf facility.

BENEFITS:

Improve Airport Safety and bring ARFF Station into full compliance with all current FAA requirements.

CONSTRUCTION COST

\$18.8M

SCHEDULE

Completed:
August 2016



New Cargo Facility Hilo International Airport

Phase 1 – Apron Hardstand & Taxiway



Public Benefit:
Supports the cargo handling needs of the Hawaii island community with a new 290,000 sq. ft. apron hardstand/taxiway and a 63,000 sq. ft. cargo facility. The old building requires extensive repairs to maintain.

Start: Phase I (Apron) – Oct 2008

End: Nov 2012

Cost: \$14M

Start: Phase 2 (Building)- Nov 2012

End: March 2015 (COO)

Cost: \$13M



New Cargo Facility Hilo International Airport

Phase 2 - Building



Public Benefit: Supports the cargo handling needs of the Hawaii island community with a new 290,000 sq. ft. apron hardstand/taxiway and a 63,000 sq. ft. cargo facility. The old building requires extensive repairs to maintain.

Start: Phase I (Apron) - Oct 2008
End: Nov 2012
Cost: \$14M

Start: Phase 2 (Building)- Nov 2012
End: March 2015 (COO)
Cost: \$13M



Ticket Lobby & Hold Rooms Improvements Lihue Airport

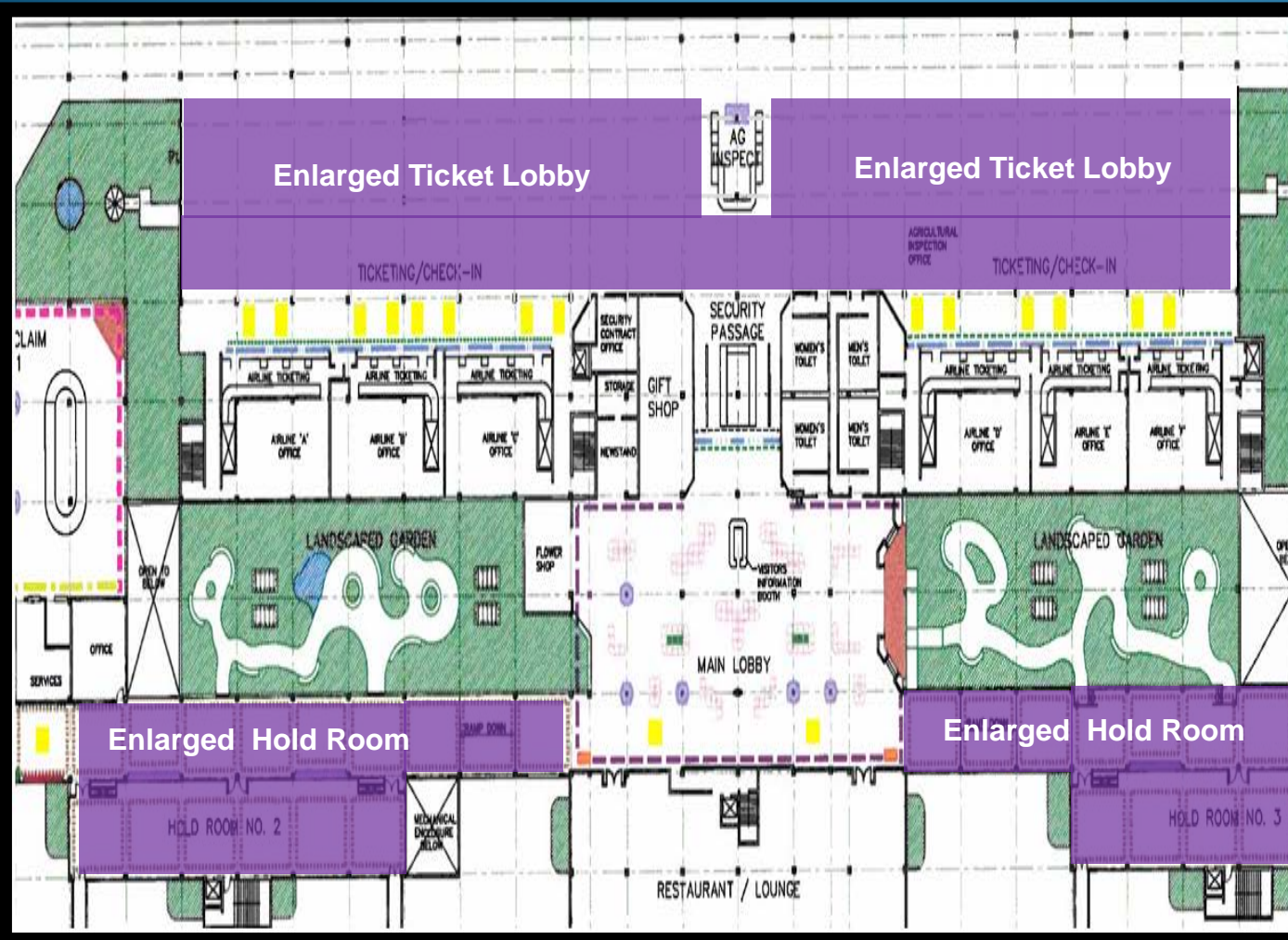


Public Benefit: To accommodate increasing domestic passenger traffic. Enlarged ticket lobby and hold rooms (extend into walkway corridor); fully air conditioned hold rooms.

Start (est.): Jan 2017
End (est.): Dec 2017
Cost (est.) \$8M



Ticket Lobby & Hold Rooms Improvements Lihue Airport

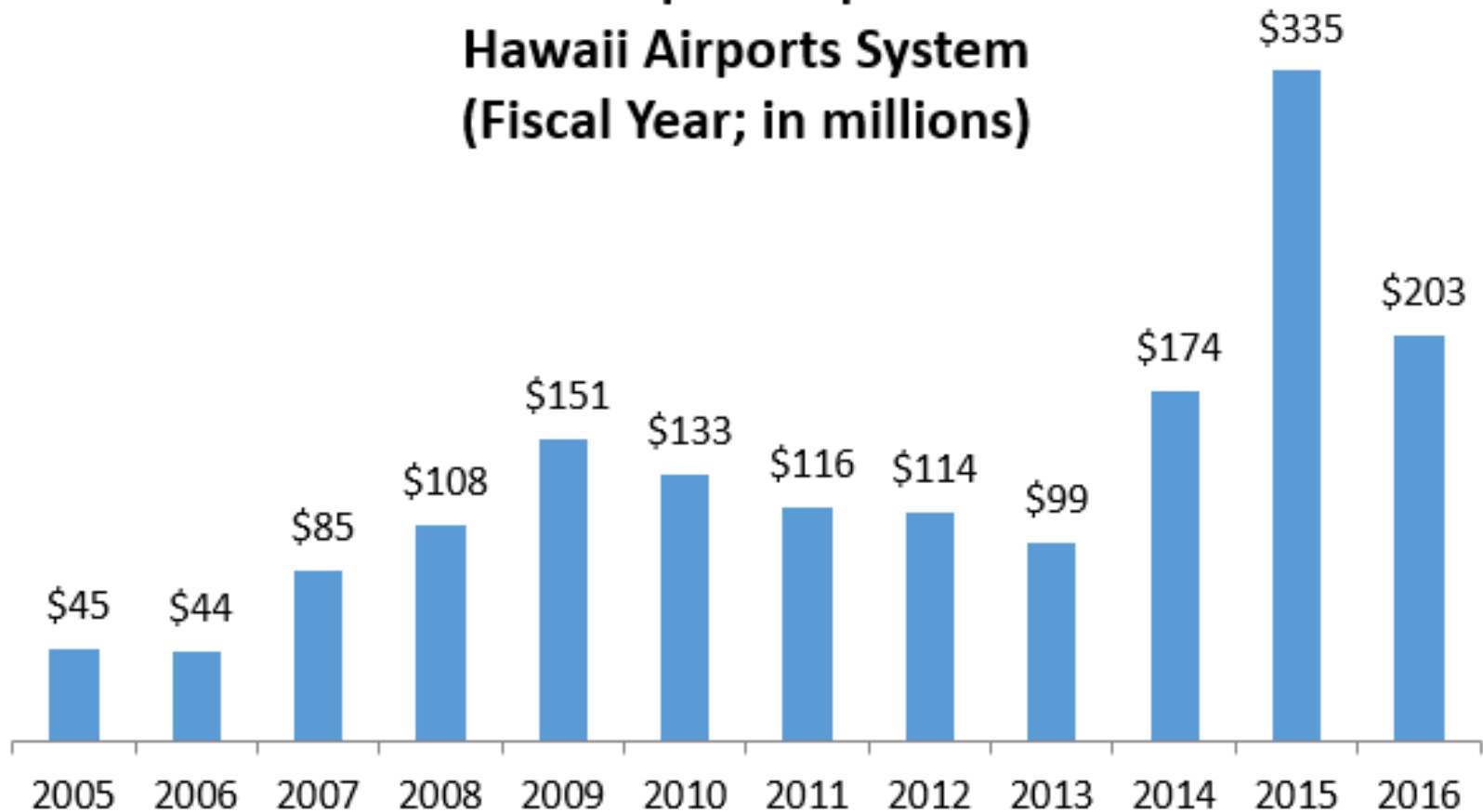


Public Benefit: To accommodate increasing domestic passenger traffic. Enlarged ticket lobby and hold rooms (extend into walkway corridor); fully air conditioned hold rooms.

Start (est.): Jan 2017
End (est.): Dec 2017
Cost (est.) \$8M

Annual Capital Expenditure Decreased to \$203 million in 2016

**Annual Capital Expenditure
Hawaii Airports System
(Fiscal Year; in millions)**



Note: Including \$22M of energy savings projects in 2014 and \$109M in 2015.

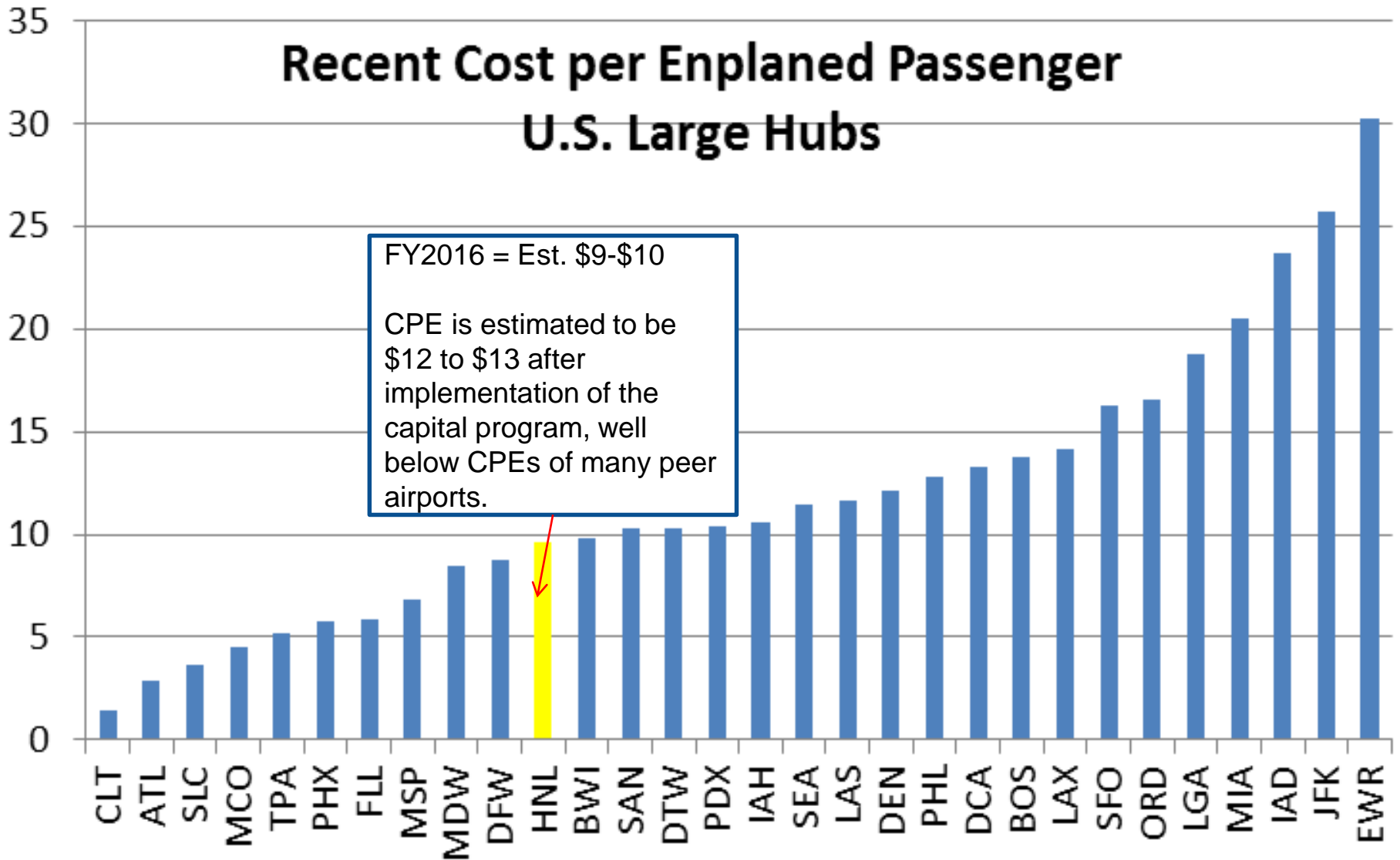


Hawaii CPE Compares Favorably

Recent Cost per Enplaned Passenger U.S. Large Hubs

FY2016 = Est. \$9-\$10

CPE is estimated to be \$12 to \$13 after implementation of the capital program, well below CPEs of many peer airports.



A large commercial airplane is shown from a low angle, flying towards the viewer against a vibrant sunset sky. The sun is a bright yellow orb on the right side of the frame, casting a warm glow over the scene. The airplane's engines and wings are clearly visible. Overlaid on the center of the image is the word "Mahalo!" in a blue, cursive font with a white outline and a slight shadow effect. In the background, there is a faint, large watermark of the State of Hawaii Department of Transportation logo, which includes the text "DEPARTMENT OF TRANSPORTATION" and "STATE OF HAWAII".

Mahalo!

STATE OF HAWAII DEPARTMENT OF TRANSPORTATION AIRPORTS